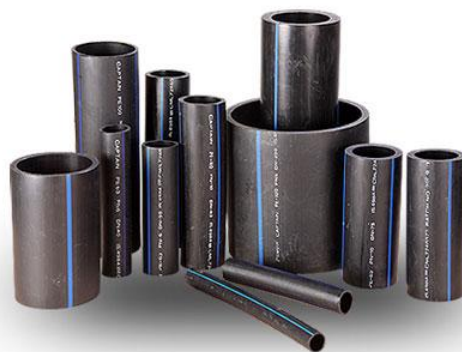




Lotus

Water Well Products





We are an export oriented business house engaged in manufacturing, distributors, exports and imports of Rock Drilling Tools and Equipments, all types of Construction Machinery and Engineering Products for last several years having exports to several countries in Asia, Gulf, Africa, Europe & Canada.

It is our company policy to emphasize on providing best international quality products to our overseas buyers at most reasonable rates within the stipulated delivery period. We can supply all above-mentioned products of best quality manufactured by reputed companies & ISO-9001 companies and OEM suppliers who supply and export these products to manufacturers in domestic and overseas markets. The company has been in this line of business since 6 years and has been doing business with several countries like Sri Lanka, Ireland, Namibia, USA, Dubai, Oman, Kenya, Tanzania, Uganda, Ethiopia, South Africa, United Kingdom, Canada, Australia. The company has got substantial technical staff having expertise in different fields and Products in which the company deals for quality control during the procurement and packing, Process.

The main motto and policy of the company is to provide its customers / clients world-class products and services quality wise and cost wise within time binding period. Due to this policy only the company has been gaining business from its buyers and clients spread globally.



Lotus DTH Hammers

The 'Lotus' **DTH Hammer** have been developed after extensive research, which ensures best quality giving hammers longer life with less need of maintenance, less wear and tear, thus giving the end user more drilling meterage and optimum performance and more income being economical. The 'Lotus' Hammers are heavy duty and are available in sizes range of 4" to 10" diameters. 'Lotus' brand Fast Forward series state of the art hammers DTH Hammers give a wide range of other benefits to the users, as they are built with valve less technology, thus the performance is extremely good & reliable. 'Lotus' hammers incorporate the facility of lubricated bit shanks to ensure spline wear to least. The facility of reversible piston casing and simple & rugged construction ensures extended service life and easy maintenance with less wear & tear & low operational costs.

'Lotus' hammers, combined with the best quality of compatible Button Bits, will give users an excellent drilling capacity & good productivity by minimizing their total drilling costs. Borehole drilling in water well & Blast holes in mines, quarries and civil construction are applications that will benefit the users less drilling costs thus enhancing their profits.

We have entire range Best international quality, heavy duty & reliable latest generation versatile DTH Hammers having fastest drilling rates, built with ultra modern technology. Available in range of 3.5" to 12" Diameters in Valve less and Valved versions, for blast hole and water well drilling application. All international leading popular hammer shanks are available with choice of Sandvik Mission, Atlas Copco and Ingersoll Rand types of shank like DHD 3.50, QL 40, Mach 44, Cop 44, DHD 340, SD 4, Panther, DHD 4, DHD 350, Mission 6, QL 60, SD 6, DHD 360, SD 8, DHD 380, SD 10, etc.

All our Hammers are manufactured with best quality raw material, Ultra modern latest international technology in machining & heat treatment facilities in-house under facilities, with stringent & vigilant quality control checks at every stage of manufacturing process. Thus it is

ensured that every hammer & button bit that goes to warehouse/stock is perfect in quality & free of any defects. All our hammers incorporate the facility of lubricated bit shanks to ensure spline wear to least. The facility of reversible piston casing and simple & rugged construction ensures extended service life & easy maintenance with less wear & tear and low operational costs.

We ensure all our users an excellent drilling capacity t & good productivity by minimizing their total drilling costs. Borehole drilling in water well & blast holes in mines, quarries and civil constructions are applications that will benefit the users & hence enhancing their profits.



Lotus DTH Hammers

(Valve-less Hammer) FF (Fast Forward) Series

DTH Hammers (Valve-less Hammers) FF (Fast Forward) Series Hammers			
HAMMER SIZE RANGE		6"	8"
HAMMER MODEL AVAILABLE		Lotus FF6	Lotus FF8
HAMMERS AVAILABLE WITH SHANK TYPE		Sandvik Drilltec Mission 6	Lotus FF8
HOLE DIA	MM	152-165	203-216
	INCH	6-6.5	8-8.5
HAMMER DIA	MM	148	170
	INCH	5.82	6.7
CYLINDER BORE	MM	118	136
	INCH	4.64	5.35
PISTON STROKE	MM	90	85
	INCH	3.54	3.35
PISTON WEIGHT	Kgs	18	23
	Lb	39.68	50.60
HAMMER LENGTH WITHOUT BIT	MM	1132	1135
	INCH	46.14	44.68
HAMMER LENGTH BIT EXTENDED	MM	1265	1220
	INCH	49.80	48
HAMMER LENGTH BIT RETRACTED	MM	1234	1250
	INCH	48.58	49.20
HAMMER WEIGHT WITHOUT BIT	Kgs	105	135
	Lb	231	297
WEIGHT OF BIT	Kgs	23.5	32.5
	Lb	51.80	71.5
SIZE OF BACK HEAD WRENCH	MM	90	115
	INCH	3.54	4.5
TOP SUB CONNECTION		3 ½" API REG PIN	4 ½" API REG PIN
AIR FLOW CONSUMPTION		cfm	cfm
100 PSI (6.8 Bars)		290	-
150 PSI (10.3 Bars)		400	-
200 PSI (13.8 Bars)		550	650
250 PSI (17.2 Bars)		730	860
300 PSI (20.7 Bars)		900	1080
350 PSI (24.1 Bars)		1050	1190



Lotus DTH Hammers MAX L4, MAX L6 (IR QL) Series



DTH Hammers – MAX L4, MAX L6 (IR QL Series)			
HAMMER SIZE RANGE		4"	6"
HAMMER MODEL AVAILABLE		Lotus Max_4	Lotus Max_6
HAMMERS AVAILABLE WITH SHANK TYPE		IR QL 40	IR QL 60
HOLE DIA	MM	105 - 127	152 – 215
	INCH	4 - 6.5	6 - 8.5
HAMMER DIA	MM	95	136.6
	INCH	3.86	5.38
CYLINDER BORE	MM	76.2	112.5
	INCH	4.64	4.43
PISTON STROKE	MM	101.6	101.6
	INCH	4	4
PISTON WEIGHT	Kgs	8	20.5
	Lb	17	45
HAMMER LENGTH WITHOUT BIT	MM	940	1020
	INCH	37.3	40.4
HAMMER LENGTH BIT EXTENDED	MM	1060	1346
	INCH	41.80	55.3
HAMMER LENGTH BIT RETRACTED	MM	1020	1254
	INCH	40.4	49.4
HAMMER WEIGHT WITHOUT BIT	Kgs	37	102.7
	Lb	81	226
WEIGHT OF BIT	Kgs	6	23
	Lb	13.20	50.6
SIZE OF BACK HEAD WRENCH	MM	44 x 63 AF	50 x 100
	INCH	1 3/4 x 2 1/2	2 x 4
TOP SUB CONNECTION		2 3/8" API REG PIN	3 1/2" API REG PIN
AIR FLOW CONSUMPTION		cfm	cfm
100 PSI (6.8 Bars)		155	365
150 PSI (10.3 Bars)		245	550
200 PSI (13.8 Bars)		340	800
250 PSI (17.2 Bars)		435	1030
300 PSI (20.7 Bars)		550	1260
350 PSI (24.1 Bars)		660	1500

Lotus Make T.C. Button Bits OF DTH Hammers			
S. No	Button Bit Size Range	Hammers Suitable for	Bit Design
1	4" – 7"	Panther / QL-40 / Sd4	Flat Face, Drop Center, Concave
2	4" – 6 1/2 "	DHD 14/DH4/MAC 4 DHD 340/QL 40	Flat Face, Drop Center, Concave
3	6" – 11"	DHD 16/Bison DHD 360/ DHD 160 / COP 62/ QL 60/ MISSION 6	Flat Face, Drop Center, Concave
4	6" – 10"	SD 6/ QL 16 / MACH 66	Flat Face, Drop Center, Concave
5	8" – 20"	DHD17/SD8/LR8/ DHD380/ QL 80	Flat Face, Drop Center, Concave

Lotus DTH Shank Hammers

DTH Hammers									
Hammers With Popular International Shank Designs									
HAMMER SIZE RANGE	3.5"	4"	4"	5"	6"	6"	8"	8"	10"
HAMMER MODEL	Lotus FDD 3.5	Lotus FDD 4	Lotus FDD 34	Lotus FDD 35	Lotus FD 6	Lotus FDD 36	Lotus FD 8	Lotus FDD 38	Lotus FD 10
AVAILABLE HAMMERS AVAILABLE WITH SHANK TYPE	DHD 3.5	SD 4	DHD 340	DHD 530	SD 6	DHD 360	SD 8	DHD 380	SD 10
HOLE DIA	MM	86 – 127	115 – 140	115 – 127	127 – 165	152 – 216	152 – 190	203 – 266	203 - 254
	INCH	3.5 – 5	4.5 – 5.5	4.5 – 5	5 - 6.5	6 – 8.5	6 - 7.5	8 – 10.5	8 – 10
HAMMER DIA	MM	78	92	92	117	138	138	173	180
	INCH	3.1	3.63	3.62	4.6	5.45	5.4	6.81	7.1
CYLINDER BORE	MM	58	66	68	91	112.5	108	136	148
	INCH	2.28	2.59	2.67	3.58	4.43	4.25	5.35	5.83
PISTON STROKE	MM	110	82	82	90	102	95	85	90
	INCH	4.33	3.23	3.23	3.54	4.2	3.74	3.34	3.54
PISTON WEIGHT	Kgs	3.0	10	8	16	24	22	31	29
	Lb	6.6	22	17	35.2	52	50.50	68	63.8
HAMMER LENGTH WITHOUT BIT	MM	885	992	1040	1070	1257	1250	1194	1315
	INCH	34.84	39.2	40.94	42.13	49.5	49.21	47	51.78
HAMMER LENGTH BIT EXTENDED	MM	945	1118	1118	1185	1408	1395	1451	1415
	INCH	37.20	44	44	46.65	55.50	54.92	57.1	55.7
HAMMER LENGTH BIT RETRACTED	MM	920	1080	1080	1150	1370	1340	1410	1375
	INCH	36.22	42.5	43.90	45.28	53.15	52.75	55.5	54.14
HAMMER WEIGHT WITHOUT BIT	Kgs	28	36	40	65	101	108	156	178
	Lb	62	81	88	143	223	238	345	391.6
WEIGHT OF BIT	Kgs	4.5	12	10	16	28	26	42	41
	Lb	9.90	26.4	22.00	35.2	62	57.2	92	90.2
SIZE OF BACK HEAD WRENCH	MM	65	65	65	85	102	102	150	150
	INCH	2.55	2.55	2.55	3.34	4.01	4.01	5.9	5.9
TOP SUB CONNECTION	2 3/8" API	2 3/8" API	2 3/8" API	2 3/8" API	3 1/2" API	3 1/2" API	4 1/2" API	4 1/2" API	6 5/8" API
	REG PI OR	REG PIN	REG PIN	REG PIN	REG PI	REG PI	REG PIN	REG IN	REG PIN
AIR FLOW CONSUMPTION	cfm	cfm	cfm	cfm	cfm	cfm	cfm	cfm	cfm
	100 PSI (6.8 Bars)	170	185	200	200				
150 PSI (10.3 Bars)	245	210	270	285	410	410	440	610	660
	350	320	340	400	520	550	680	830	960
200 PSI (13.8 Bars)		410	485	520	725	712	810	1070	1230
				645	820	865	1080	1320	1510
250 PSI (17.2 Bars)					1050	1050	1160	1450	1500
300 PSI (20.7 Bars)									
350 PSI (24.1 Bars)									

Lotus Make T.C. Button Bits OF DTH Hammers			
S. No	Button Bit Size Range	Hammers Suitable for	Bit Design
1	4" – 7"	Panther / QL-40 / Sd4	Flat Face, Drop Center, Concave
2	4" – 6 1/2 "	DHD 14/DH4/MAC 4 DHD 340/QL 40	Flat Face, Drop Center, Concave
3	6" – 11"	DHD 16/Bison DHD 360/ DHD 160 / COP 62/ QL 60/ MISSION 6	Flat Face, Drop Center, Concave
4	6" – 10"	SD 6/ QL 16 / MACH 66	Flat Face, Drop Center, Concave
5	8" – 20"	DHD17/SD8/LR8/ DHD380/ QL 80	Flat Face, Drop Center, Concave

Lotus Button Bits

'Lotus' – DTH (down the hole) **Button Bit** are available in different sizes ranging from 3" to 14" to suit different application. To give peak penetration in water well drilling as well as blasting holes for mining / construction industry, 'Lotus' Button Bits are made from the best of the alloy steel, machine to high precision and heat treated with most advanced heat treatment technology.

Button Bits for All Types of Hammers: we can manufacture & supply bits of all types & sizes for any make of hammer, with exact specifications and material property as per client's sample in any bulk or small quantity at very good prices. we have best infrastructure & facilities available with us.

Lotus Threaded Button

Best international quality **Threaded Button Bit** for Top Hammer (Drifter) Drilling with different thread and Dia sizes are available, as

Sr. No.	Threads	Bit Size
1	R 32	45 mm, 48 mm, 64 mm, 76 mm
2	R 38	64 mm, 76 mm, 89 mm
3	T 38	64 mm, 76 mm, 89 mm, 102 mm, 115 mm, 127 mm
4	T 45	76 mm, 89 mm, 102 mm, 115 mm, 127 mm
5	T 51	89 mm, 102 mm, 115 mm, 127 mm

Salient Features

'Lotus' Button Bit

- ✓ Available in sizes range of 3" to 14" diameters.
- ✓ Consistence in Quality
- ✓ Larger Product Life
- ✓ Higher Wear Resistance



Tricone Rock Bit

Pioneers in the industry, we offer Rock Roller Tricone Bits such as TCI Tooth Rock Roller Tricone Bit and Steel Tooth Rock Roller Tricone Bit from India.

Best international quality Rock Roller Bits are available in both TCI (Tungsten Carbide Inserts) & Milled Steel Tooth types in all sizes with different IADC Code manufactured as per API Standards, suitable for drilling Soft, Medium Hard & Hard formation.

We are instrumental in offering a broad array of **Steel Tooth Rock Roller Tricone Bit** that is manufacture by our experts, using quality approved raw material and advanced technology. The offered range is checked on various parameters by our quality inspectors. We offer this range in various sizes as per the needs of the clients. In addition to this, clients can avail this product at market price.

Salient Features

Rock Roller Tricone Bits

- ✓ Durability
- ✓ Rugged Construction
- ✓ Corrosion Resistance
- ✓ Suitable for Soft Medium-

Steel Tooth & TCI Tricone Rock Bit – Open & Sealed Bearing TYPE

Manufactured as per API Standards and specifications with superior quality steel, advanced technologies, designed for use with compressed air or fluid circulation systems. Regular and Jet circulation available. Cutting structures allow optimum penetration rates and long runs even in the most difficult and abrasive formations. Weight on the bits is distributed through a five anti-friction bearing matched and ground with precision to tolerance. Critical areas on the external portion of the bit are protected with the Tungsten Carbide Alloy hard facing. All sizes of Steel Tooth Tricone Bits are available for: Soft, Medium-Soft, Medium-Hard & Hard formations for Blast Hole & Water-well Drilling: Milled Steel Tooth Type & Tungsten Carbide Insert type.



Steel Milled Tooth Tricone Rock Bit



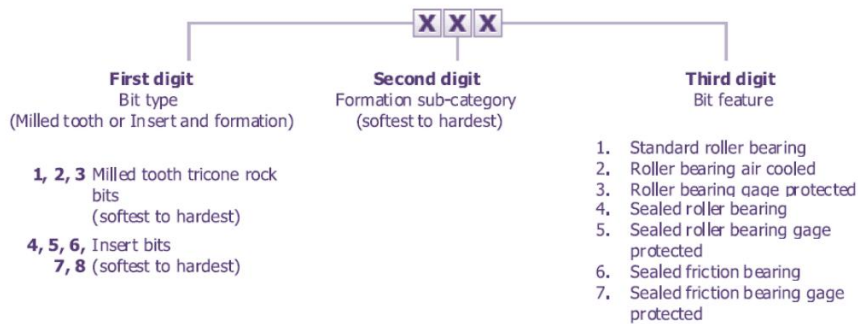
Mill tooth Tricone drill bits have very high drilling rates in soft formations. Tricone bits are hard faced the milled teeth so that they sharpen themselves while drilling. Milled tooth Tricone bits are designed for very soft to medium hardness formations. Sealed bearing milled tooth Tricone bit with or without gauge protection. These are the best performing and longest lasting style of Tricone on the market. Gauge protection increases the life of the drill bits.

BAILING VELOCITY TABLE

Delivered Air Volume CFM required for a Bailing Velocity of 5,000 FPM

PIPE SIZE				BIT SIZE														
In.	mm	4 3/4	5	5 1/8	5 5/8	5 7/8	6	6 3/4	6 3/4	7 3/8	7 7/8	9	9 7/8	10 5/8	12 3/4	13 3/4	15	17 3/4
		121	127	130	143	149	152	159	171	187	200	229	251	261	311	349	381	445
2 3/8	61	461	528	562	709													
		13.06	14.95	15.92	20.08													
2 7/8	73	390	456	491	638	716	756											
		11.04	12.91	13.91	18.07	20.28	21.41											
3 1/2	89	281	348	382	529	607	648	732	909	1149	1358	1875						
		7.96	9.86	10.82	14.98	17.19	18.35	20.73	25.74	32.54	32.54	53.10						
4	102	178	245	280	426	505	545	629	807	1047	1255	1773						
		5.04	6.94	7.93	12.06	14.30	15.43	17.81	22.85	29.65	35.54	50.21						
4 3/4	114							513	691	931	1139	1657						
								14.53	19.57	26.37	32.36	46.93						
5	127							383	561	802	1010	1526	1978	2397	3411			
								10.85	15.89	22.71	28.60	43.27	56.02	67.88	96.60			
5 1/2	140								418	658	867	1384	1835	2254	3268			
									11.84	18.63	24.55	39.19	51.97	63.83	92.55			
6 1/4	159									418	626	1144	1594	2013	3027			
										11.84	17.73	32.40	45.14	57.01	85.72			
6 5/8	168										495	1012	1463	1882	2896			
											14.02	28.66	41.43	53.30	82.01			
7	178											873	1323	1742	2756			
												24.72	37.47	49.33	78.05			
7 3/4	197											571	1022	1441	2455	3517		
												16.17	28.94	40.81	69.53	99.59		
8 5/8	219												631	1050	2064	3358		
													17.87	29.74	58.45	95.09		
9	229													870	1884	2946		
														24.64	53.35	83.42		
10	250														1366	2428	3409	
															38.69	68.75	96.54	
10 3/4	273															941	2004	2985
																26.65	56.75	84.54

IADC code number



Type of Bit

1 2 3 for steel tooth bit (from soft to hard)
4 5 6 7 8 for tungsten carbide bit (from soft to hard)

Formation Hardness		Bit Features	
1	2	3	4
		1. Standard open bearing	
		2. Standard open bearing / Air cooled	
		3. Standard open bearing / Gage protected	
		4. Sealed roller bearing	
		5. Sealed roller bearing / Gage protected	
		6. Sealed journal bearing	
		7. Sealed journal bearing / Gage protected	

Steel Milled Tooth Tricone Rock Bits



Center Jet is mounted at the centre of the bit. They are effectively used to prevent bit balling in sticky formations. Available both in convergent and diffuser type.



They are used to increase rate of penetration in soft to medium soft formations. These nozzles keep the jet flow closer to the hole bottom. When the bit has mini-extended nozzles, ensure that the bit does not rest against the nozzles during make-up or breakout of bit.

3. GAUGE PROTECTION INSERTS:



These are profiled inserts pressed in the outer edge of the gauge face. These protect the gauge of the bit in abrasive formations. Gauge protection inserts are standard on TCI bits.

4. EXTRA SHIRT TAIL AND BALL PLUG PROTECTION:



Tungsten carbide inserts are pressed into the shirt tail area to provide extra protection of ball plug and shirt tail.

5. AIR CIRCULATION:



This is available in milled tooth & TCI Bits to drill with air as a circulation media. Some part of air flow is utilized to clean & cool the bearings.

6. BODY & SHIRT TAIL PROTECTION:



Additional protection to the leg body & shirt tail whilst drilling in abrasive formations & in the directional drilling applications.

Classification - IADC code



Standard roller bearing
(IADC xx1 or xx3)



Roller bearing air cooled
(IADC xx2 or xx3)



Sealed roller bearing
(IADC xx4 or XX5)



Sealed friction bearing
(IADC xx6 or xx7)

To enhance gage holding and seal protection. Roller cone bits provide value with a variety of shirrtail protection packages for high-angle drilling, abrasive formation and steerable applications. Theses shirrtail protection packages can be used to tailor bits to meet your drilling needs.

Motor Hard facing (M feature) for demanding motor applications, a generous application of tungsten carbide hard facing is applied to the shirrtail lower edge and leading edge of the bit to provide enhanced seal protection.

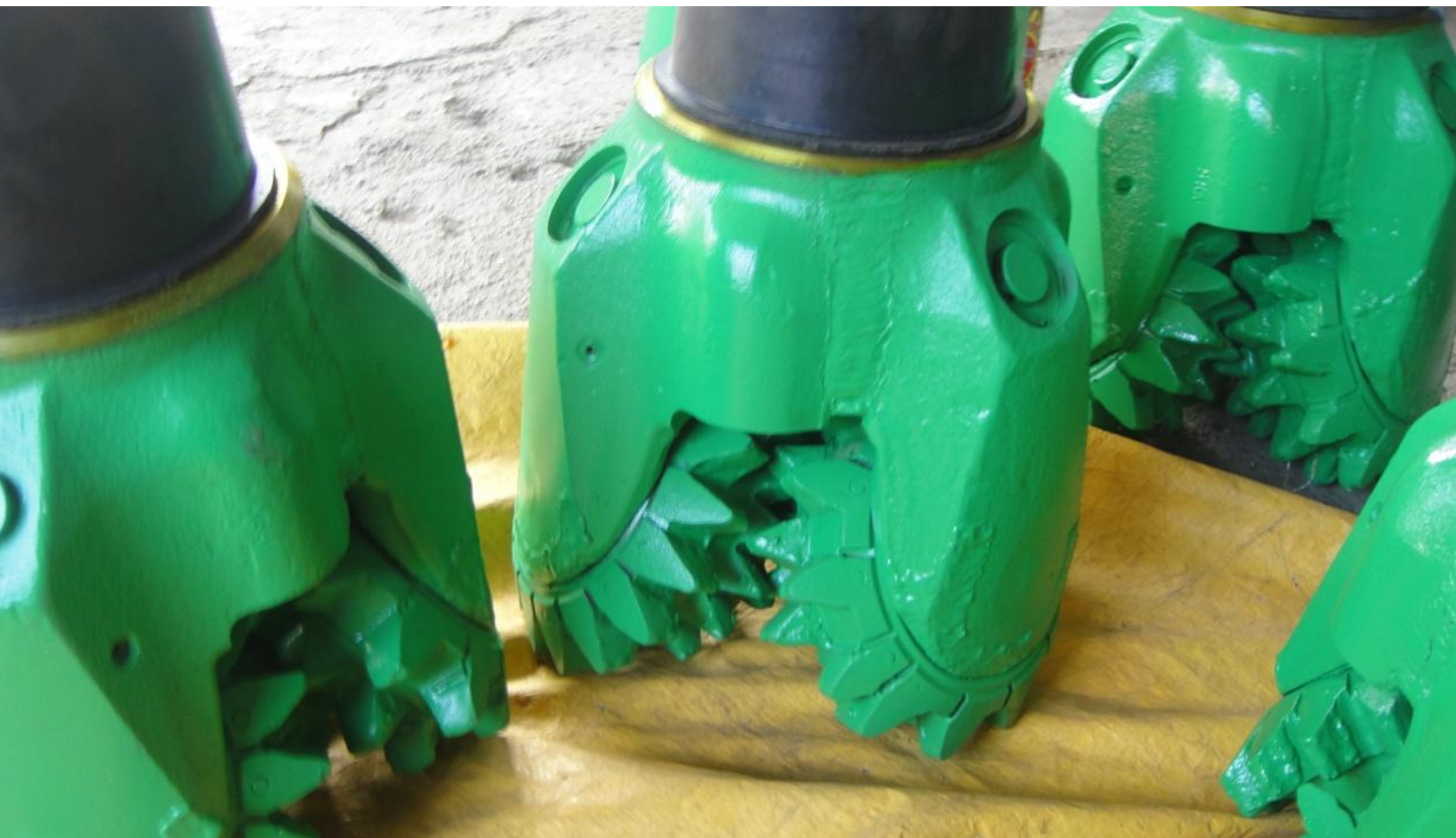
Leading Edge Shirrtail Inserts (S feature) Tungsten Carbide Insert are placed along the leading edge of the shirrtail providing additional wear resistance in motor applications commanding high RPM or where additional shirrtail protection is needed.

Stabilization Inserts ® feature. Stabilization inserts enhance standard shirrtail patterns by providing bit stabilization and additional protection to the pressure compensator in high-angle applications or in deviation-prone formations.

Diamond Enhanced Shirrtail Inserts (Z feature) In premium shirrtail protection package PCD-Capped Inserts replaced tungsten carbide inserts (TCI) in strategic locations to provide maximum shirrtail protection in abrasive formations or directional application shirrtail protection. Motor Hardfacing – M Feature, Leading Edge & Hardfacing – S Feature Stabilization and Hardfacing – ® Feature, Diamond Enhanced and Hardfacing – Z Feature.

We provide ourselves on the quality of our process and product. **Our Quality Motto "Customer Delight"**

As a Global supplier to drilling industries, we are proud to offer next generation Tricone rock drill bits manufactured are per API Standards with latest CNC Machines. These Tricone Bits are designed for taking higher loads and to have excellent penetration rate for any formation. Tricone Bits are available in form of Milled Tooth and Tungsten Carbide Insert Bits.



Drill Rods

FABRICATED DRILL PIPE				INTEGRAL DRILL PIPE		RECOMMENDED THREAD CONNECTION	AVAILABLE IN FOLLOWING LENGTHS (ft)
TUBING		TOOL JOINT		TUBING			
OD (inch)	WT (inch)	OD (inch)	ID (inch)	OD (inch)	ID (inch)		L
D		D1	d	D	d		
2.875	0.250	2.875	1.000			2.3/8" API Reg.	6', 8', 10', 12', 15'
2.875	0.346	2.875	1.000			2.3/8" API Reg.	6', 8', 10', 12', 15'
3.000	0.157	3.000	1.000			2.3/8" API Reg.	6', 8', 10', 12', 15', 20'
3.000	0.250	3.000	1.000			2.3/8" API Reg.	6', 8', 10', 12', 15', 20'
3.000	0.346	3.000	1.000			2.3/8" API Reg.	6', 8', 10', 12', 15', 20'
3.500	0.157	3.500	1.653			2.3/8" API IF	6', 8', 10', 12', 15', 20'
3.500	0.250	3.500	1.653			2.3/8" API IF	6', 8', 10', 12', 15', 20'
3.500	0.346	3.500	1.653			2.3/8" API IF	6', 8', 10', 12', 15', 20'
4.000	0.250	4.000	1.653			2.7/8" API IF	16', 20'
4.000	0.346	4.000	1.653	4.000	1.500	2.7/8" API IF	16', 20'
4.500	0.250	4.500	1.496			3.1/2" API Reg.	5', 7', 10', 12', 16', 20', 30'
4.500	0.346	4.500	1.496			3.1/2" API Reg.	5', 7', 10', 12', 16', 20', 30'
4.500	0.500	4.500	1.496	4.500	1.750	3.1/2" API Reg.	5', 7', 10', 12', 16', 20', 30'
4.500	0.250	4.500	1.377			3" BECO	5', 7', 10', 12', 16', 20', 30'
4.500	0.346	4.500	1.377			3" BECO	5', 7', 10', 12', 16', 20', 30'
4.500	0.500	4.500	1.377	4.500	1.750	3" BECO	5', 7', 10', 12', 16', 20', 30'
5.000	0.375	5.000	1.496			3.1/2" API Reg.	20', 25', 32.75', 33', 35', 36'
5.000	0.500	5.000	1.496			3.1/2" API Reg.	20', 25', 32.75', 33', 35', 36'
5.000	0.625	5.000	1.496			3.1/2" API Reg.	20', 25', 32.75', 33', 35', 36'
5.000	0.375	5.000	2.000			3.1/2" BECO	20', 25', 32.75', 33', 35', 36'
5.000	0.500	5.000	2.000			3.1/2" BECO	20', 25', 32.75', 33', 35', 36'
5.000	0.625	5.000	2.000	5.000	2.063	3.1/2" BECO	20', 25', 32.75', 33', 35', 36'
				5.500	2.313	4." BECO	20', 25', 32.75', 33', 35', 36'
6.000	0.750	6.000	2.000			4." BECO	20', 25'
6.000	1.000	6.000	2.000			4." BECO	20, 25'



Trolley & Skid Mounted Air Compressors

Suitable for use in quarry, mines, water wells & construction industries. Brands available: Atlas Copco, Ingersoll Rand, ELGI & Similar.

Technical Specifications

Type	XAHS 186	
Normal effective working pressure	bar	12
Free air delivery 2)	l/s	181
Free air delivery 2) with after cooler	l/s	176
Noise level 4)		
- Sound pressure level (Lp) measured		
According to under free conditions at		
7m distance	dB(A)	85
Capacity of compressor oil system	l	42
Max. ambient temperature at sea level	°C	55
Max. ambient temperature at sea level		
With after cooler	°C	50



Features:

- Ready to operate with a full range of options.
- Use in all weather conditions.
- Small over all dimensions & light weight
- Silenced canopy
- Option of After cooler + moisture separator

Advantages:

- Easy transported or moved on site
- Easy to operate
- Rugged construction built to last

Technical Specifications

Type	XAHS 486	
Normal effective working pressure	bar	12
	psi	175
Actual free air delivery	l/sec	228
	cfm	486
Oil capacity compressor system	ltrs	35

Unit Dimensions

Length	mm	3150
Width	mm	1670
Height	mm	1850





Compressors specially made for water well drilling segment.

Technical Specifications

Compressor Models	Unit	PA165	PA230H	PA427M	PA415ATC	PA585 ATC
Performance						
Max. Free Air Delivery (Flushing)	CFM	470	540	1150	1200	1400
Drilling Pressure	PSIG	160	185	300	320	350
Unloading Pressure	PSIG	170	195	320	345	365
Compressor Type	-	Single Stage	Single Stage	Two Stage	Two Stage	Two Stage
Cooling System	-	Oil Injection	Oil Injection	Oil Injection	Oil Injection	Oil Injection
Oil Capacity (Ref II)	Liter	36	40	85-90	85-90	85-90
Max. Operating Temperature	deg C	50	50	50	50	50
Min. Operating Temperature	deg C	5	5	5	5	5

Portable Air Compressor

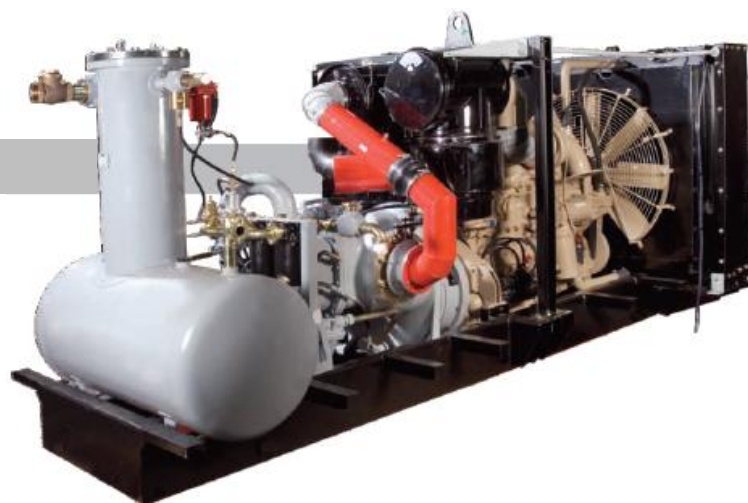


- Unique cooling air exhaust and engine exhaust routing.
- Centralized control panel giving access to easy operation & monitoring.
- Efficient air/oil separation system resulting in minimum lub oil consumption.
- Genuine quality spare parts and service kits through nation-wide dealer network
- Cost effective maintenance solutions with service plans.



Model	Capacity		MAX		Engine	Dimensional Data (LxBxH) (mm)		
	m ³ /min	cfm	bar g	psig		Length	Width	Height
Skid Mounted Compressors								
DS 475-150	13.5	475	10.5	150	6BTA, Cummins	2782	1215	1837
DS 650-200	18.4	650	14	200	6CTA8.3, cummins	3000	1851	2120
DS 900-200	25.5	900	14	200	NTA855C (BC), Cummins	4562	1634	2350
DS 900-350	25.5	900	24.6	350	NTA855C (BC), Cummins	4562	2285	2370
DS 900-350	25.5	900	24.6	350	KTA1150C, Cummins	4200	2100	2690
DS 1000-275	28.3	1000	19.3	275	NTA855C (BC), Cummins	4562	2285	2370
DS 1100-300	31.15	1100	21.1	300	NTA855C (BC), Cummins	4562	2285	2370
DS 1100-350	31.1	1100	24.6	350	KTA1150C, Cummins	4200	2100	2690
DS 1200-325	33.98	1200	22.5	325	NTA855C (BC), Cummins	4562	2285	2370

Note: Due to continuous engineering improvements, the specifications are subject to change without further notice



Lotus PVC Casing Pipes

Providing you the best range of PVC & HDPE Pipes such as Lotus UPVC Plumbing Pipe, Water Well Casing Pipe, Agricultural Pipe, Drain & Sewerage Pipe, Garden Hose, Specialized Pipe for Geo Drilling Application and many more items with effective & timely delivery.

We are a prominent manufacturer, exporter and supplier of an excellent range of **UPVC Pipe**. These pipes are manufactured as per ASTM – 1785 D with A grade virgin quality raw materials in Schedule 40, Schedule 80 & Schedule 120. Lotus Pipes go through stringent quality controls during production stages to ensure optimum quality standards. Lotus Plumbing pipes can be utilized without any trouble for main water connections as well as water distribution system in Bathroom, Washing places, kitchens, Toilets and many more places, as they are specially designed to for most reliable in use in high rise buildings, commercial complexes, hotels & resorts, hospitals, factory, laboratory, residential complexes etc.



Salient Features

Lotus PVC (UPVC) Pipes

- ✓ Leak Proof
- ✓ Excellent Finish
- ✓ Durability
- ✓ Heat Resistance
- ✓ Easy Installation
- ✓ Light Weight

PVC Casing Pipes

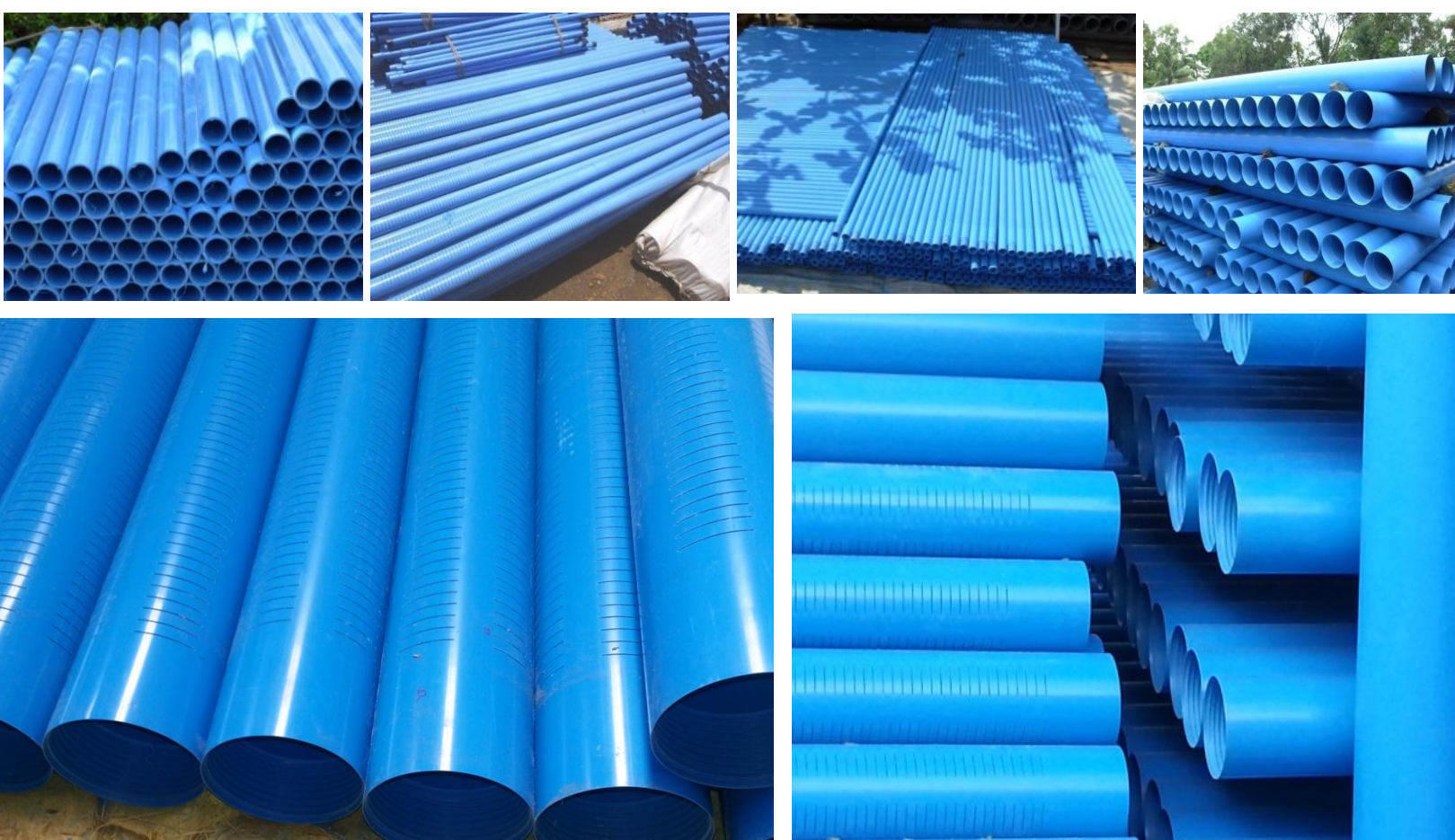
Lotus Rigid Casing PVC (Polyvinyl Chloride) pipes are Manufactured strictly conformity to IS 4985 / IS 13592 / IS 12818, DIN 4925, 8062 ASTM 1785/F480, BS 3505 standard specifications and other international standards and specifications. Our products are used by the local water authorities and are known as the top mark for quality. The granting of the top mark confirms that the company's manufacturing, testing and quality control systems complies with the stringent licensing requirements and thus ensures that the products quality is consistently maintained.

Application

- Geothermal Heating & Cooling Systems.
- Water well casing and water pipe lines for potable water, hand Pumps.
- Plumbing & sanitary.
- Drain, Sewerage, waste & rain water pipes line systems.
- Conduit pipes for Electrification work.
- Industrial, Domestic and Commercial usage in chemical, industrial effluent disposals, water treatment plants
- Many more applications

'Lotus' water well casing pipes: Socketed joints / flush joints with & without Threads and Slots

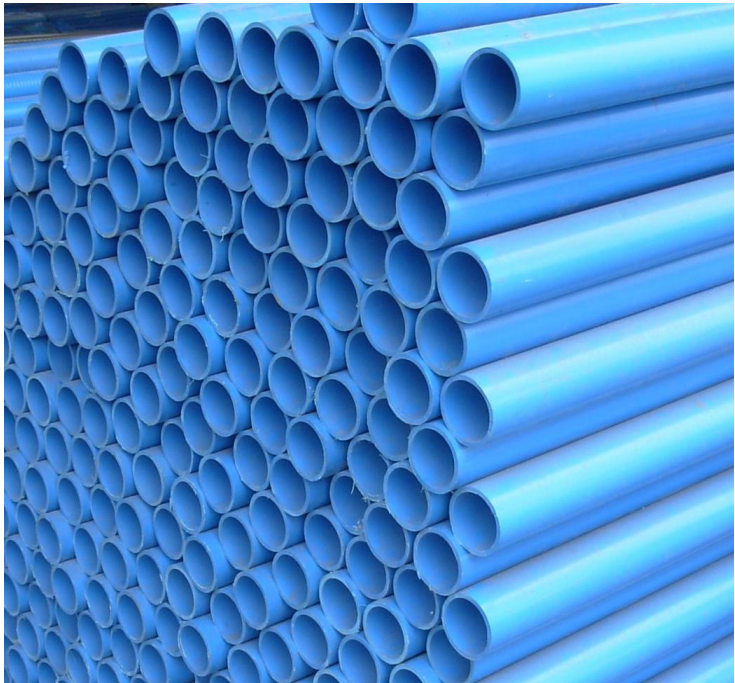
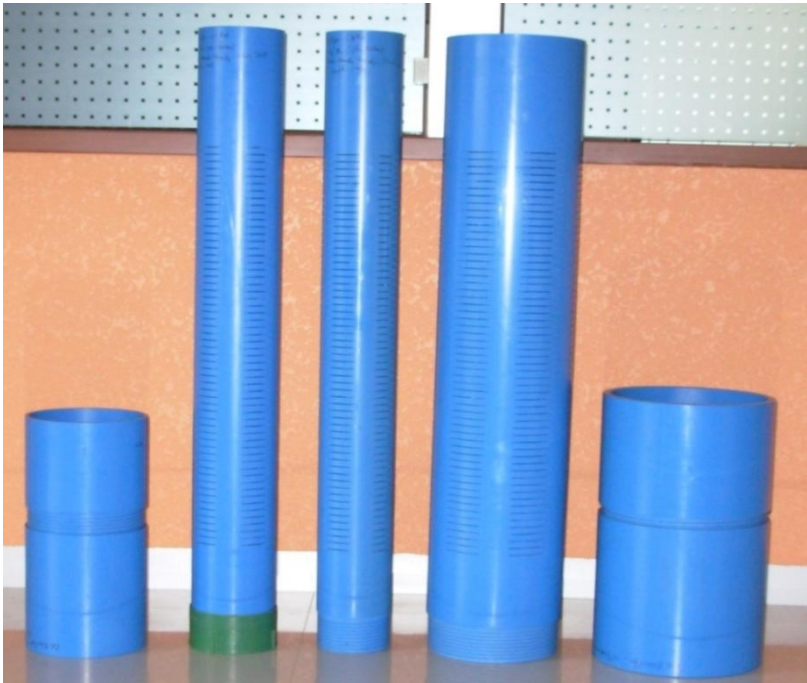
RIGID PVC (uPVC) CASING PIPES: PLAIN (BLIND) & SCREEN (SLOTTED/ PERFORATED) WITH MALE – FEMALE THREADS & FLSUH JOINTS: As per International Standards								
SR.NO	SIZE OD	OD in MM		ID in MM		WALL THKNS In MM		LENGTHS AVAILABLE IN METERS
	MM	Mín	Max	Mín	Max	Mín	Max.	
1	26	26	26.2	19	19.2	3.5	3.6	1/2/3 & 6
2	33	33	33.5	24	24.4	4.5	4.7	1/2/3 & 6
3	48	48	48.2	38	38.2	5	5.4	1/2/3 & 6
4	60	60	60.3	52	52.3	4	4.4	1/2/3 & 6
5	88	88	88.3	80	80.4	4	4.4	1/2/3 & 6
6	113	113	113.3	103	103.5	5	5.6	1/2/3 & 6
7	125	125	125.4	113	113.4	5.5	5.8	1/2/3 & 6
8	140	140	140.4	125	125.4	7.5	8.2	1/2/3 & 6
9	165	165	165.4	150	150.4	7.50	8.5	1/2/3 & 6
10	200	200	200.5	175	175.5	8.80	9.5	1/2/3 & 6
11	225	225	225.5	200	200.5	10.0	11.2	1/2/3 & 6
12	250	250	250.6	225	225.6	11.0	12.5	1/2/3 & 6
13	280	280	280.6	255	225.6	12.5	13.5	1/2/3 & 6
14	300	300	330.6	275	275.8	15	16.5	1/2/3 & 6



CS Grade: Suitable for Wells with depth up to 80 meters : Size- 100 DN to 250 DN					
Nominal Diameter (DN)	Outer Diameter		Outer Diameter over connection	Wall Thickness	
	Min	Max		Min	Max
IN MM	MM	MM	MM	MM	MM
4 100	113.0	113.3	117.0	4.0	4.4
5 125	140.0	140.4	148.0	4.9	5.4
6 150	165.0	165.4	174.0	5.7	6.5
7 175	200.0	200.5	211.0	7.0	7.8
8 200	225.0	225.5	238.0	7.6	8.8
10 250	280.0	280.5	292.0	9.6	11.0



CM Grade: Suitable for Wells with depth above 80 meters & up to 250 meters : Size- 40 DN to 315 DN					
Nominal Diameter (DN)	Outer Diameter		OD over connect-ion	Wall Thickness	
	Min	Max		Min	Max
IN MM	MM	MM	MM	MM	MM
11/2 40	48.0	48.2	52.0	3.5	4.0
2 50	60.0	60.2	66.0	4.0	4.6
3 80	88.0	88.3	94.0	4.0	4.6
4 100	113.0	113.3	120.0	5.0	5.7
5 125	140.0	140.4	150.0	6.5	7.3
6 150	165.0	165.4	178.0	7.5	8.5
7 175	200.0	200.5	215.0	8.8	9.8
8 200	225.0	225.5	243.0	10.0	11.2
10 250	280.0	280.5	298.0	12.5	14.0
12 300	330.0	330.6	352.0	14.5	16.20



HDPE Pipes

'Lotus' HDPE pipes are Manufactured strictly conformity to IS 4984:1995 standard specifications and other leading international standards and specifications. Our products are used by the local water & other government & private sector authorities and are known as the top mark for quality. The granting of the top mark confirms that the company's manufacturing, testing and quality control systems complies with the stringent licensing requirements and thus ensures that the products quality is consistently maintained.



Advantages

- ❖ Light-weight for ease of installation and handling
- ❖ Immunity to corrosion, chemical and micro-biological resistance
- ❖ Flexible
- ❖ High impact strength and toughness
- ❖ Alternative installation techniques possible
- ❖ Our products are examined and tested to ensure to compliance with all the relevant standard specifications. The specified tests are all carried out in our laboratory. They are as follow:-
- ❖ Appearance, dimensions and ovality
- ❖ Hydrostatic strength at 80° C for 165 hours
- ❖ Hydrostatic strength at 80° C for 1000 hours
- ❖ Oxidation Induction Time (OIT)
- ❖ Melt Flow Rate (MFR)

Salient Features

- ❖ Manufactured as per IS 4984:1995 standards.
- ❖ Pipes are manufactured either in long coils or 6 meter length depending on pipe dimensions and customer requirements.
- ❖ Best quality pipes at most reasonable prices.
- ❖ Pipes that meet your needs.
- ❖ Special customer requirements are accepted.

Sizes Available (Outer Diameters in MM): 20, 25, 32, 40, 50, 63, 75, 90, 110, 125, 140, 160, 180, 200, 225, 250, 280, 315, 355, 400, 450 & 500 mm

Available Material Grades: PE 63, PE 80 & PE 100.

'Lotus' Submersible Rigid PVC Rising Pipes

'Lotus' brand heavy duty submersible PVC Rising pipes are manufactured from fine quality of raw material with specially designed Square threads & rubber gasket ensuring 100% leak proof joints. These pipes have very high load carrying capacity and are recommended up to 550 feet depth subject to total load carrying capacity. The mirror smooth inside surface & corrosion resistance property ensures high flow rates and thus brings an end to the problem of deposition normally experienced with GI pipes. Also it results in power savings.

NOMINAL DIAMETER	OUTER DIAMETER OF PIPE IN MM		OUTER DIAMETER OVER CONNECTION IN MM	WALL THICKNESS IN MM		LOAD CAPACITY (KGS.)
	IN MM	MIN	MAX	MIN	MAX	MAX
1	25	33.30	33.50	42.00	4.55 5.05	1000
1 ¼	32	42.10	42.30	51.00	4.85 5.40	1500
1 ½	40	48.15	48.40	58.00	5.10 5.65	1700
2	50	60.20	60.45	69.00	5.55 6.20	2100
2 ½	65	75.75	76.05	88.00	7.05 7.85	2700
3	80	88.7	89.10	102.00	7.65 8.50	4000
4	100	114.10	114.50	128.00	8.60 9.55	5700



'Lotus' uPVC Plumbing Pipes and Fittings



SPECIFICATION OF PLUMBING & BELL FORM PIPES									
Material: uPVC					Length: Available in 3 & 6 Meters.				
Colour : Blue & Ivory (Plumbing Pipes only).					Threads: Parallel Pipe - 14 TPI for 15mm (½") & 20 mm (¾") and 11 TPI for 1" & above.				
Dimensions: As per Schedule 40, 80 & 120 of ASTM - D - 1785 - 91					Working Temperature: Upto 60° C continuous / Upto 900 C short time (Max. upto 3 Minutes)				
Sizes									
	15mm	20mm	25mm	32mm	40mm	50mm	65mm	80mm	100mm
	½"	¾"	1"	1.1/4"	1.1/2"	2"	2.1/2"	3"	4"
SCH-40	Yes	Yes	Yes	Yes	Yes	Yes	Yes	Yes	Yes
SCH-80	Yes	Yes	Yes	Yes	Yes	Yes	Yes	Yes	Yes
SCH-120	Yes	Yes	Yes	Yes	Yes	Yes	Yes	Yes	Yes
DIMENSIONS OF PLUMBING PIPES (ALL DIMENSIONS IN MM)									
WALL THICKNESS									
Size		Diameter		Schedule 40		Schedule 80		Schedule 120	
mm	Inch	Min	Max	Min	Max	Min	Max	Min	Max
15	½	21.24	21.44	2.80	2.90	3.75	3.85	4.30	4.80
20	¾	26.57	26.77	2.90	3.00	3.90	4.00	4.30	4.80
25	1	33.27	33.53	3.40	3.50	4.55	4.70	5.10	5.70
32	1.1/4	42.03	42.29	3.60	3.70	4.85	4.95	5.50	6.10
40	1.1/2	48.11	48.41	3.70	3.80	5.10	5.25	5.70	6.40
50	2	60.17	60.17	3.90	4.00	5.55	5.70	6.40	7.10
65	2.1/2	75.72	75.72	5.20	5.35	7.00	7.20	7.60	8.50
80	3	88.70	88.70	5.50	5.65	7.60	7.80	8.90	10.00
100	4	114.10	114.10	6.00	6.20	8.55	8.75	11.10	12.40

Note: Schedule 120 pipes are manufactured on request.



Bentonite Bags of Drilling API grades in power, lumps and pellet forms



Available in packing of 50 Kgs in PP bags

Submersible Pumps & Motors



- All stainless steel & cast iron – stainless construction Body.
- Oil filled and water filled type.
- Suitable for head depth – **50 to 500 meters**
- Suitable for water delivery – **50 to 400 liters/minute**
- Available in **3", 4" and 6"** Diameters.

Features:

- Stainless steel outer shell & shaft.
- Maintenance free lubricated ball bearings.
- Rotation: Counter clock wise.
- Vertical & Horizontal mounting position.
- Cooling & lubrication by non-toxic fluid.
- Motor for permanent split capacitor.
- Pressure compensation diaphragm.

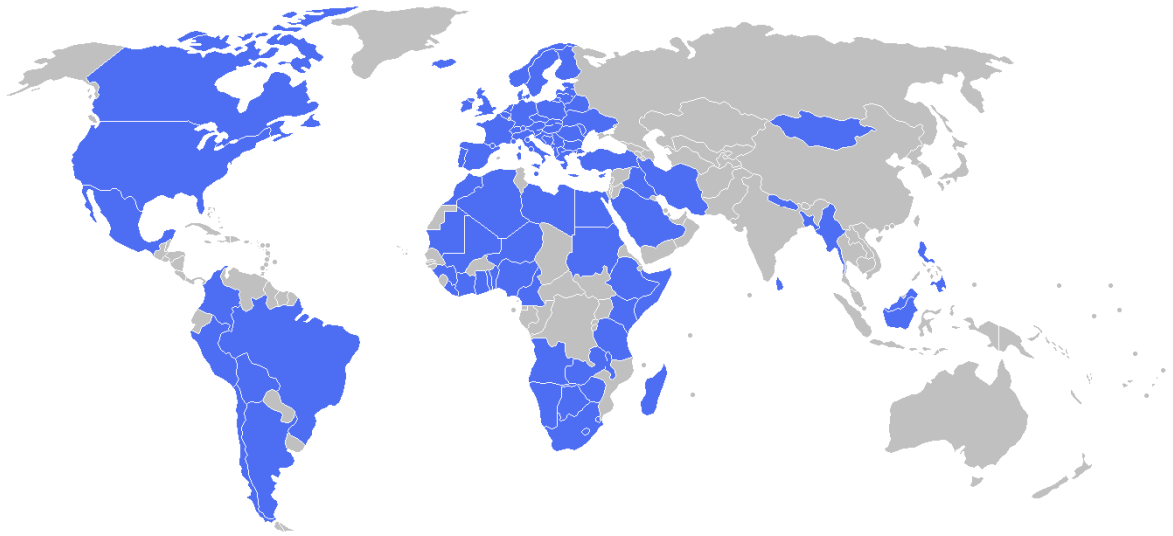
Application:

- For Water Supply
- For Irrigation
- For Civil & Industrial applications

Performance Range:

- Head range up to 60 meters
- Flow range up to 6.0 m³/h







EXPORTING TO MORE THAN 32 COUNTRIES ACROSS THE GLOBE SINCE 13 YEARS



Kamal Import Exports Inc.

 'Lotus' House, Plot No. 21, Behind Hotel Sai Palace, Chetnanagar, Mumbai-Agra Road, Nasik - 422 009
Maharashtra, India.

 Lotus Enclave, Gat. No. 435-36 Gonde Industrial Area, Nasik-Mumbai Agra Road, Gonde Village, Taluka:
Igatpuri, Dist: Nasik, Maharashtra, India

 + 91 253 2375703, + 91 98220 94605  + 91 253 2375704  raj.varma  rajvarma-ip@eth.net

 info@kamalimpex.com | info@lotushammers.com | info@lotuspipes.com  www.lotushammers.com